

HI VIS WORK WEAR



SCAN®
SAFETY MADE SIMPLE

CATALOGUE | 2023

FABRICS

Our carefully chosen fabrics are designed to withstand demanding conditions and provide lasting durability. Constructed from up to 300 Denier 100% polyester, these fabrics offer top-notch functionality. Equipped with robust zippers and reinforced closures, they are built to endure various conditions.

Our waterproof garments are treated with a water-resistant coating and seam-welded to keep dampness at bay. With quilted liners and concealed hoods, our jackets are designed to keep you warm while ensuring breathability and comfortable fit throughout the day.

TESTING

Our products are independently tested and certified by accredited, notified and approved bodies from across the world. Marked with both CE and UKCA markings, our garments conform to the industry's PPE regulations and standards.



RIS-3279-TOM UK RAILWAY STANDARD



RIS-3279-TOM (formerly GO-RT 3279) is a high visibility standard that only applies to the rail industry in the UK, as opposed to the EU-wide nature of other EN standards. The aim is to ensure that rail workers on or near the trackside are sufficiently visible to trains approaching at speed or any other traffic. See garments marked with an icon for conformity.

CONTENTS

WAISTCOATS	04
UTILITY WAISTCOATS	10
POLO SHIRTS	14
MOTORWAY JACKETS	16
BOMBER JACKETS	20
MOTORWAY TROUSERS	22
ACCESSORIES	26

SUSTAINABILITY

We are committed to minimizing our environmental footprint, and therefore, we diligently pursue the adoption of sustainable practices and materials whenever feasible.

All plastic bags employed for packaging our garments are crafted entirely from recycled plastics, aligning with our dedication to responsible sourcing.



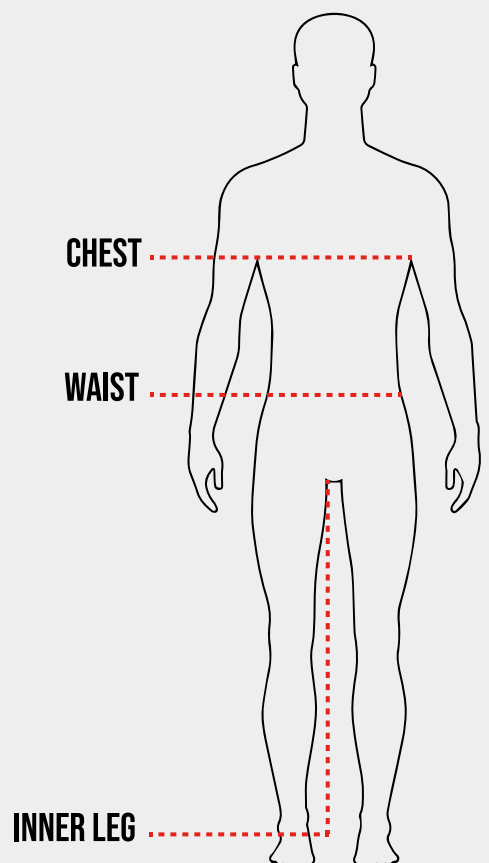
Scan proudly holds membership in Sedex, the world's foremost data platform for evaluating supply chain practices, encompassing storage, analysis, sharing, and reporting of sustainability measures.



We ensure our factories are audited using the Sedex Members Ethical Trade Audit, underscoring our dedication to upholding ethical and responsible trade practices.



MEASURING GUIDE



HI VIS WAISTCOATS

STANDARD WAISTCOAT YELLOW

- 100% POLYESTER KNIT
- RETRO-REFLECTIVE TAPE BANDS WIDTH 50MM
- HOOK AND LOOP FASTENING



HOOK & LOOP
FASTENING



RETRO-REFLECTIVE
TAPE BANDS

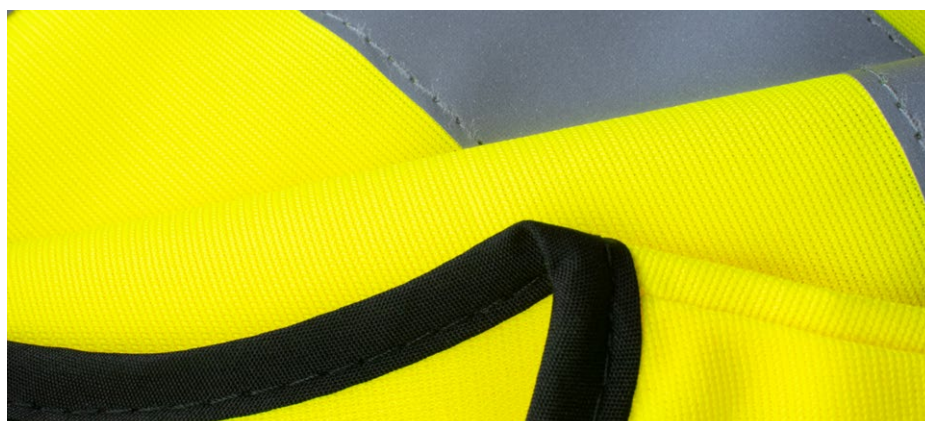


BLACK BOUND
EDGING

CODE	SIZE	COLOUR	CHEST
SCAHVWM	MEDIUM	YELLOW	114cm (45in)
SCAHVWL	LARGE	YELLOW	122cm (48in)
SCAHVWXL	X LARGE	YELLOW	130cm (52in)
SCAHVWXXL	XX LARGE	YELLOW	138cm (54in)
SCAHVWXXXL	XXX LARGE	YELLOW	146cm (58in)



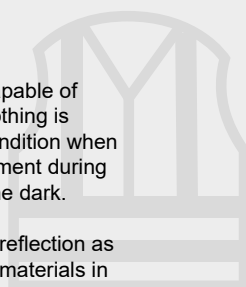
EN ISO 20471:2013+A1:2016



EN ISO 20471

Specifies requirements for high visibility clothing which is capable of visually signalling the user's presence. The high visibility clothing is intended to provide conspicuity of the wearer in any light condition when viewed by operators of vehicles or other mechanized equipment during daylight conditions and under illumination of headlights in the dark.

Performance requirements are included for colour and retroreflection as well as for the minimum areas and for the placement of the materials in protective clothing.



STANDARD WAISTCOAT ORANGE

- 100% POLYESTER KNIT
- RETRO-REFLECTIVE TAPE BANDS WIDTH 50MM
- HOOK AND LOOP FASTENING



HOOK & LOOP
FASTENING



RETRO-REFLECTIVE
TAPE BANDS



BLACK BOUND
EDGING

CODE	SIZE	COLOUR	CHEST
SCAHVWMO	MEDIUM	ORANGE	114cm (45in)
SCAHVWLO	LARGE	ORANGE	122cm (48in)
SCAHVWXLO	X LARGE	ORANGE	130cm (52in)
SCAHVWXXLO	XX LARGE	ORANGE	138cm (54in)
SCAHVWXXXLO	XXX LARGE	ORANGE	146cm (58in)



EN ISO 20471:2013+A1:2016
RIS-3279-TOM



STANDARD WAISTCOAT

PINK

- 100% POLYESTER KNIT
- RETRO-REFLECTIVE TAPE BANDS WIDTH 50MM
- HOOK AND LOOP FASTENING



HOOK & LOOP
FASTENING

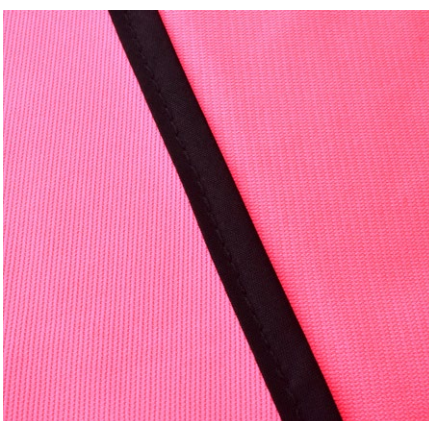
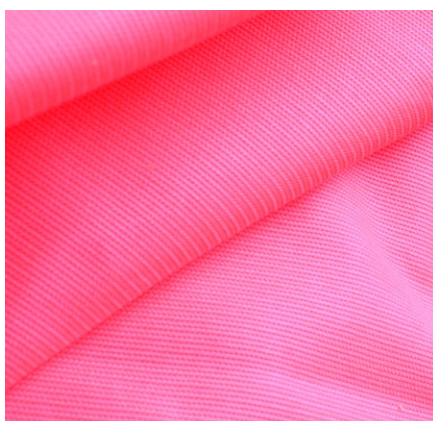


RETRO-REFLECTIVE
TAPE BANDS



BLACK BOUND
EDGING

CODE	SIZE	COLOUR	CHEST
SCAHVWMP	MEDIUM	PINK	114cm (45in)
SCAHVWLP	LARGE	PINK	122cm (48in)





STANDARD WAISTCOAT

CHILDRENS YELLOW

- 100% POLYESTER KNIT
- RETRO-REFLECTIVE TAPE BANDS WIDTH 50MM
- HOOK AND LOOP FASTENING



CODE	SIZE	COLOUR	CHEST
SCAHVWC6	CHILD 4-6	YELLOW	80cm (31in)
SCAHVWC9	CHILD 7-9	YELLOW	90cm (35in)
SCAHVWC13	CHILD 10-13	YELLOW	104cm (41in)



UTILITY WAISTCOAT

YELLOW

- 100% POLYESTER KNIT
- 3 STORAGE POCKETS AND 1 PEN POCKET
- PARALLEL, HORIZONTAL AND VERTICAL RETRO-REFLECTIVE TAPE BANDS WIDTH 50MM
- PLASTIC COVER ID HOLDER WITH ADDITIONAL D-LOOP.
- FULL FRONT ZIP CLOSURE



HOOK & LOOP
POCKETS



RETRO-REFLECTIVE
TAPE BANDS



FRONT ZIP
FASTENING

CODE	SIZE	COLOUR	CHEST
SCAHVUWM	MEDIUM	YELLOW	114cm (45in)
SCAHVUWL	LARGE	YELLOW	120cm (47in)
SCAHVUWXL	X LARGE	YELLOW	126cm (50in)



EN ISO 20471:2013+A1:2016



UTILITY WAISTCOAT

ORANGE

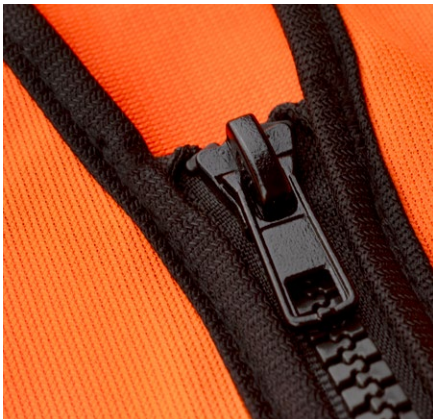
- 100% POLYESTER KNIT
- 3 STORAGE POCKETS AND 1 PEN POCKET
- PARALLEL, HORIZONTAL AND VERTICAL RETRO-REFLECTIVE TAPE BANDS WIDTH 50MM
- PLASTIC COVER ID HOLDER WITH ADDITIONAL D-LOOP.
- FULL FRONT ZIP CLOSURE



CODE	SIZE	COLOUR	CHEST
SCAHVUWMO	MEDIUM	ORANGE	114cm (45in)
SCAHVUWLO	LARGE	ORANGE	120cm (47in)
SCAHVUWXLO	X LARGE	ORANGE	126cm (50in)



EN ISO 20471:2013+A1:2016
RIS-3279-TOM





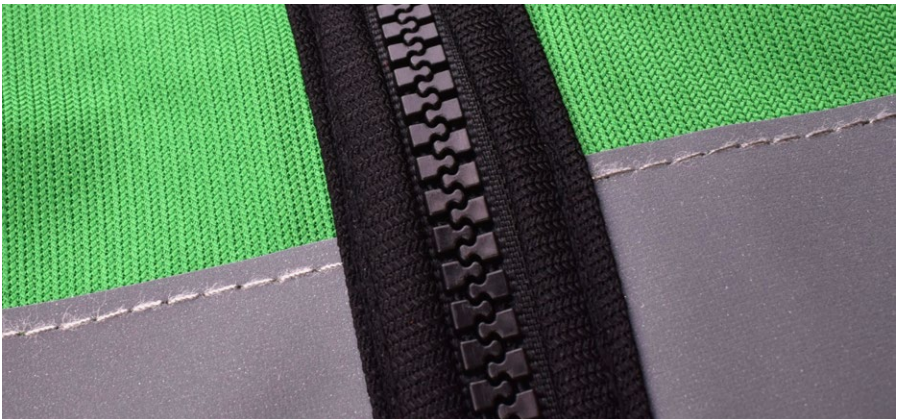
UTILITY WAISTCOAT

GREEN

- 100% POLYESTER KNIT
- 3 STORAGE POCKETS AND 1 PEN POCKET
- PARALLEL, HORIZONTAL AND VERTICAL RETRO-REFLECTIVE TAPE BANDS WIDTH 50MM
- PLASTIC COVER ID HOLDER WITH ADDITIONAL D-LOOP.
- FULL FRONT ZIP CLOSURE



CODE	SIZE	COLOUR	CHEST
SCAHVUWMG	MEDIUM	GREEN	114cm (45in)
SCAHVUWLG	LARGE	GREEN	120cm (47in)
SCAHVUWXLG	X LARGE	GREEN	126cm (50in)



HI VIS POLO SHIRT

HI VIS POLO SHIRT YELLOW/ORANGE

- 100% POLYESTER 140G BIRDSEYE KNIT
- PARALLEL, HORIZONTAL & VERTICAL RETRO-REFLECTIVE TAPE BANDS WIDTH 50MM
- HIGH VISIBILITY FLUORESCENT BACKGROUND



WICKING
FABRIC



REGULAR
FIT



RETRO-REFLECTIVE
TAPE BANDS

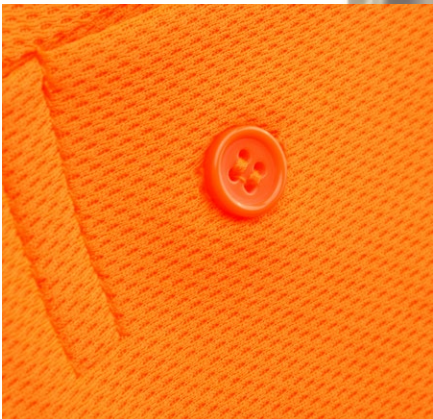
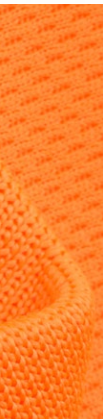


CODE	SIZE	COLOUR	CHEST
SCAHVPSMO	MEDIUM	ORANGE	112cm (44in)
SCAHVPSLO	LARGE	ORANGE	116cm (46in)
SCAHVPSXLO	X LARGE	ORANGE	120cm (47in)
SCAHVPSXXLO	XX LARGE	ORANGE	124cm (49in)

CODE	SIZE	COLOUR	CHEST
SCAHVPSM	MEDIUM	YELLOW	112cm (44in)
SCAHVPSL	LARGE	YELLOW	116cm (46in)
SCAHVPSXL	X LARGE	YELLOW	120cm (47in)
SCAHVPSXXL	XX LARGE	YELLOW	124cm (49in)

EN ISO 20471:2013+A1:2016





HI VIS JACKETS

MOTORWAY JACKET YELLOW

- 300D POLYESTER FABRIC SHELL
- 190 POLYESTER TAFFETA LINER
- 160G POLYESTER FILLING
- 50MM RETRO-REFLECTIVE TAPING
- 2 X WAIST POCKETS, 1 X CHEST POCKET, 1 X INTERNAL POCKET
- TWO-WAY HEAVY-DUTY ZIP FASTENING
- STUD FASTENING STORM FLAP



WATERPROOF



QUILTED
NYLON LINING



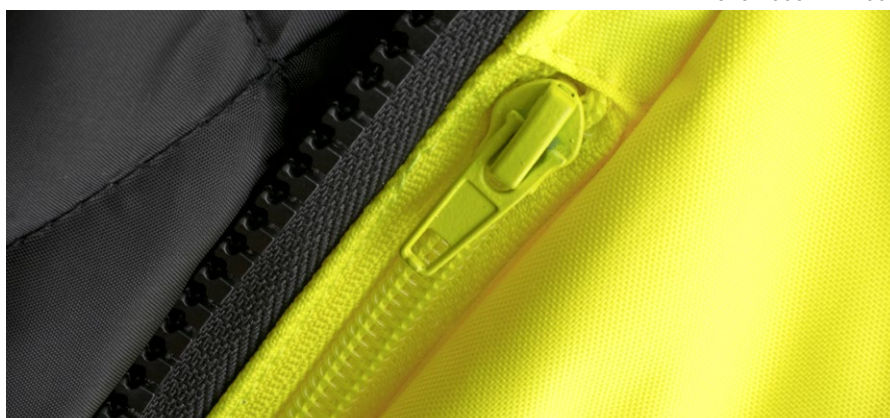
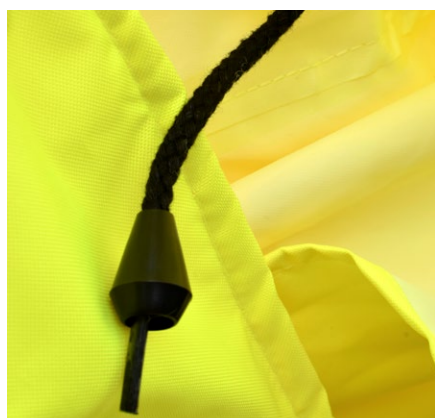
CONCEALED
HOOD



CODE	SIZE	COLOUR	CHEST
SCAHVMJM	MEDIUM	YELLOW	126cm (50in)
SCAHVMJL	LARGE	YELLOW	134cm (52in)
SCAHVMJXL	X LARGE	YELLOW	142cm (56in)
SCAHVMJXXL	XX LARGE	YELLOW	150cm (59in)



EN ISO 20471:2013+A1:2016
EN 343:2003+A1:2007



EN 343

EN 343 is a measure of waterproofing and breathability within the protective garment and these standards ensure ideal outdoor workwear. Items that are tested using EN343 standards are judged on two categories. Firstly, protection against wet weather, fog and humidity. Secondly, breathability and ensuring moisture or sweat can escape. These are rated from one to three with three representing the highest level of protection.

MOTORWAY JACKET YELLOW & BLACK

- 300D POLYESTER FABRIC SHELL
- 190 POLYESTER TAFFETA LINER
- 160G POLYESTER FILLING
- 50MM RETRO-REFLECTIVE TAPING
- 2 X WAIST POCKETS, 1 X CHEST POCKET, 1 X INTERNAL POCKET
- TWO-WAY HEAVY-DUTY ZIP FASTENING
- STUD FASTENING STORM FLAP



WATERPROOF



QUILTED
NYLON LINING

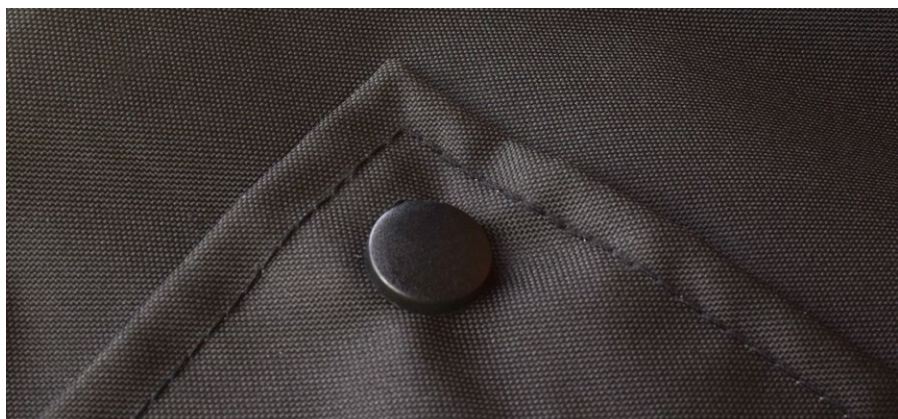
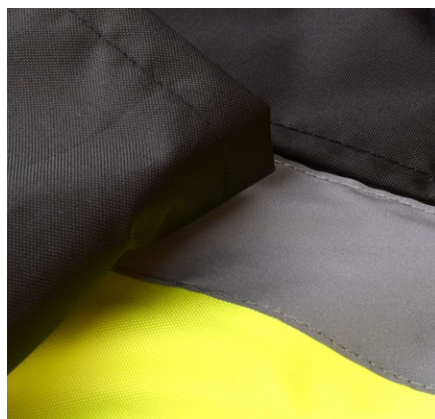


CONCEALED
HOOD

CODE	SIZE	COLOUR	CHEST
SCAHVMJMYB	MEDIUM	YELLOW & BLACK	126cm (50in)
SCAHVMJLYB	LARGE	YELLOW & BLACK	134cm (52in)
SCAHVMJXLYB	X LARGE	YELLOW & BLACK	142cm (56in)
SCAHVMJXXLYB	XX LARGE	YELLOW & BLACK	150cm (59in)



EN ISO 20471:2013+A1:2016
EN 343:2003+A1:2007



HI VIS JACKETS



MOTORWAY JACKET

ORANGE

- 300D POLYESTER FABRIC SHELL
- 190 POLYESTER TAFFETA LINER
- 160G POLYESTER FILLING
- 50MM RETRO-REFLECTIVE TAPING
- 2 X WAIST POCKETS, 1 X CHEST POCKET, 1 X INTERNAL POCKET
- TWO-WAY HEAVY-DUTY ZIP FASTENING
- STUD FASTENING STORM FLAP



WATERPROOF



QUILTED
NYLON LINING



CONCEALED
HOOD

CODE	SIZE	COLOUR	CHEST
SCAHVMJMJO	MEDIUM	ORANGE	126cm (50in)
SCAHVMJLO	LARGE	ORANGE	134cm (52in)
SCAHVMJXLO	X LARGE	ORANGE	142cm (56in)
SCAHVMJXXLO	XX LARGE	ORANGE	150cm (59in)



3
1



3

EN ISO 20471:2013+A1:2016
EN 343:2003+A1:2007
RIS-3279-TOM



BOMBER JACKET

YELLOW

- 300D POLYESTER FABRIC SHELL
- 190 POLYESTER TAFFETA LINER
- 160G POLYESTER FILLING
- 50MM RETRO-REFLECTIVE TAPING
- 2 X WAIST POCKETS, 1 X CHEST POCKET, 1 X INTERNAL POCKET
- HEAVY-DUTY ZIP FASTENING
- STUD FASTENING STORM FLAP



WATERPROOF



QUILTED
NYLON LINING



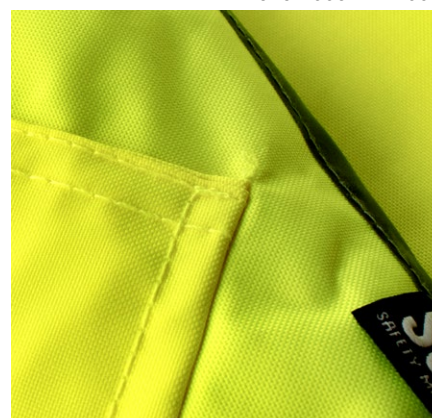
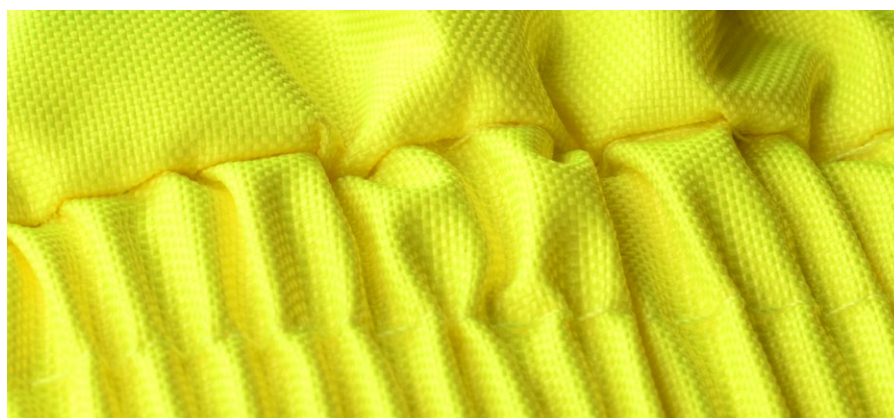
CONCEALED
HOOD



CODE	SIZE	COLOUR	CHEST
SCAHVBJM	MEDIUM	YELLOW	126cm (49in)
SCAHVBJL	LARGE	YELLOW	134cm (52in)
SCAHVBJXL	X LARGE	YELLOW	142cm (55in)
SCAHVBJXXL	XX LARGE	YELLOW	150cm (59in)
SCAHVBJXXXL	XXX LARGE	YELLOW	158cm (62in)



EN ISO 20471:2013+A1:2016
EN 343:2003+A1:2007



BOMBER JACKET

ORANGE

- 300D POLYESTER FABRIC SHELL
- 190 POLYESTER TAFFETA LINER
- 160G POLYESTER FILLING
- 50MM RETRO-REFLECTIVE TAPING
- 2 X WAIST POCKETS, 1 X CHEST POCKET, 1 X INTERNAL POCKET
- HEAVY-DUTY ZIP FASTENING
- STUD FASTENING STORM FLAP



WATERPROOF



QUILTED
NYLON LINING



CONCEALED
HOOD

CODE	SIZE	COLOUR	CHEST
SCAHVBJMO	MEDIUM	ORANGE	126cm (49in)
SCAHVBJLO	LARGE	ORANGE	134cm (52in)
SCAHVBJXLO	X LARGE	ORANGE	142cm (55in)
SCAHVBJXXLO	XX LARGE	ORANGE	150cm (59in)
SCAHVBJXXXLO	XXX LARGE	ORANGE	158cm (62in)



EN ISO 20471:2013+A1:2016
EN 343:2003+A1:2007
RIS-3279-TOM



HI VIS TROUSERS

MOTORWAY TROUSER YELLOW

- 300D POLYESTER FABRIC
- FULLY ELASTICATED WAISTBAND
- RETRO-REFLECTING TAPE
- ACCESS SLITS TO UNDER GARMENTS
- ANKLE STUD FASTENER



WATERPROOF



ELASTICATED
WAIST

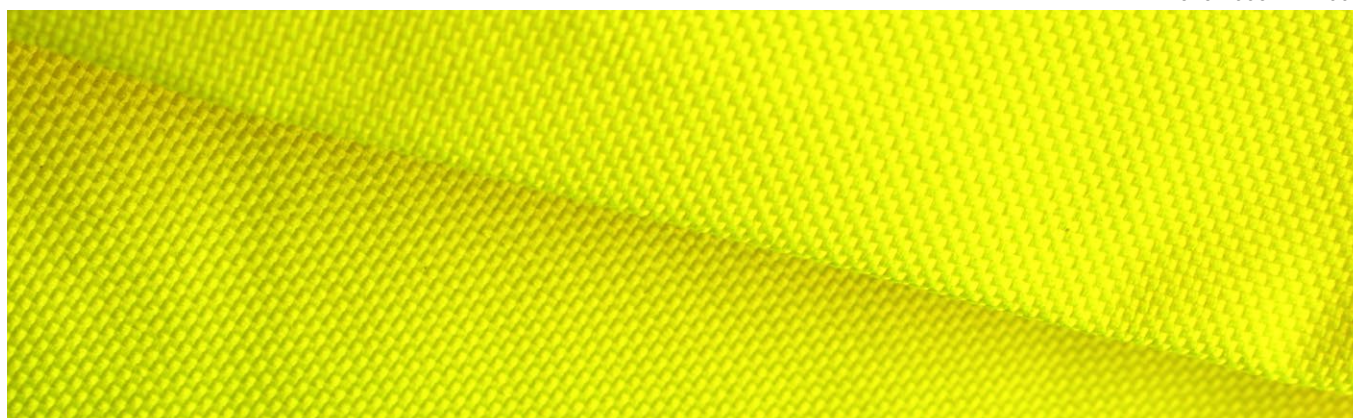


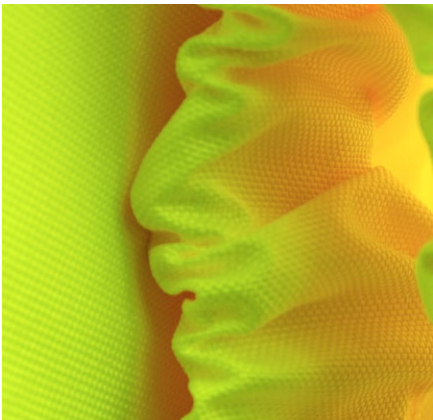
SECURED SIDE
POCKETS

CODE	SIZE	COLOUR	WAIST	INNER LEG
SCAHVMTM	MEDIUM	YELLOW	60-109cm (24-43in)	74cm (29in)
SCAHVMTL	LARGE	YELLOW	65-114cm (25-45in)	76cm (30in)
SCAHVMTXL	X LARGE	YELLOW	70-119cm (27-47in)	78cm (31in)
SCAHVMTXXL	XX LARGE	YELLOW	75-124cm (29-49in)	80cm (32in)



EN ISO 20471:2013+A1:2016
EN 343:2003+A1:2007





HI VIS TROUSERS



MOTORWAY TROUSER

ORANGE

- 300D POLYESTER FABRIC
- FULLY ELASTICATED WAISTBAND
- RETRO-REFLECTING TAPE
- ACCESS SLITS TO UNDER GARMENTS
- ANKLE STUD FASTENER



WATERPROOF



ELASTICATED
WAIST



SECURED SIDE
POCKETS

CODE	SIZE	COLOUR	WAIST	INNER LEG
SCAHVMTMO	MEDIUM	ORANGE	60-109 (24-43in)	74cm (29in)
SCAHVMTLO	LARGE	ORANGE	65-114 (25-45in)	76cm (30in)
SCAHVMTXLO	X LARGE	ORANGE	70-119 (27-47in)	78cm (31in)
SCAHVMTXXLO	XX LARGE	ORANGE	75-124 (29-49in)	80cm (32in)



3
1



1

EN ISO 20471:2013+A1:2016
EN 343:2003+A1:2007
RIS-3279-TOM



ACCESSORIES

THINSULATE BEANIE YELLOW/ORANGE

- 100% ACRYLIC FIBRE
- 3M® THINSULATE® INNER LINING FOR EXTRA WARMTH
- HIGH VISIBILITY

CODE	SIZE	COLOUR
SCAHVBEANO	ONE SIZE	YELLOW
SCAHVBEAN	ONE SIZE	ORANGE





SCAN[®]

SAFETY MADE SIMPLE

SCAN SAFETY PRODUCTS
3 White Lodge Bus. Est., Hall Road, Norwich,
Norfolk, NR4 6DG, UK.

TUCKS O'BRIEN LTD
24 Magna Dr, Magna Bus. Pk, Citywest Rd,
Dublin 24, D24 FNYO, Ireland.

E-mail: enquiries@scan-safety.com



Images are for illustration purposes only; contents are as listed. Scan Safety cannot be held liable for any inaccuracies in this publication. All products subject to availability while stocks last. All prices valid until 31st December 2023